



All inclusive prefab smart **design** houses

[www.passionhouses.com](http://www.passionhouses.com)

# THE DIFFERENCE

---

The first **smart design house** concept in the world

## **D**ESIGN HOUSES

Modern exterior and interior design. Stylish homes with smart solutions. Designed by awarded Nordic architects and designers.

## **R**EVOLUTIONARY FAST

Short production time and fast delivery. Delivery time 2 to 4 months. Installation time on sight 12h to 2 weeks.

## **A**LL-INCLUSIVE

Fully furnished and equipped houses. Houses are ready to move in.

## **F**IXED BUDGET

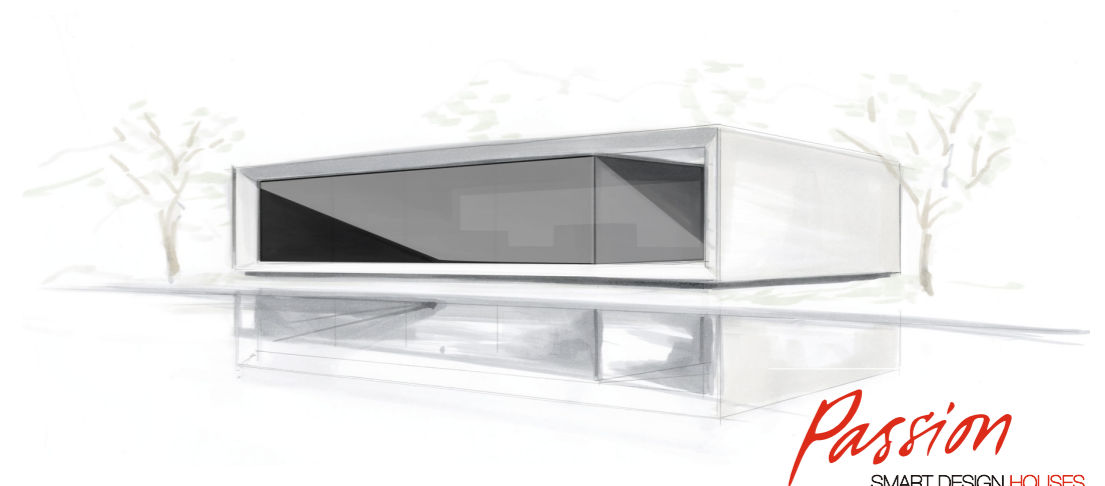
No unexpected costs and on time delivery.

## **H**IGH QUALITY

Houses are built indoors under strict supervision.

## **E**NERGY-EFFICIENT

Eco-friendly and innovative materials. Energy-efficient heating systems



*Passion*  
SMART DESIGN HOUSES



# Passion concept

---

The design of **M series is inspired by the Passion fruit.** Similarly to the outer layer of the fruit that wraps to protect the fruit sweet content our Passion M series roofline embraces the elegant interior spaces. The combination of the desirable and stylish interior that is embraced by a solid, fitting exterior is what makes Passion M series houses unique.

**Modern design and timeless architecture make Passion M Series houses stand out on every landscape.** Low horizontal lines and large panoramic windows emphasize simplicity and an open minded approach towards living. Our specially engineered roofline uses sunlight smartly - absorbing energy in winter and insulating in summer.

Passion M Series **houses include ready made interiors with furniture.** The interior is perfectly tailored to your needs. Everything is particularly inhabitant orientated. Top architects and designers were tasked to offer you utmost comfort with style. Clever storage spaces, improved lighting solutions, optimally-placed home appliances and other well thought-out details bring a touch of metropolitan modern living, wherever you might choose to live

Passion M Series houses are pre built indoor to achieve high quality standards. **Houses are assembled onto landscape in 2 weeks.** This helps to achieve minimal environmental impact to nature and keeps the neighborhood happy with minimum disturbance.

# Passion positioning

Passion house is a premium category product and reasonable investment for a person who appreciates design, quality and comfort.



# MODEL RANGE

---



51 m<sup>2</sup>

model range  
gross area m<sup>2</sup> (total area m<sup>2</sup>)

## M1

51 (81) m<sup>2</sup>  
1 bedroom, 1 bathroom



## M1+

51 (81) m<sup>2</sup>  
1 bedroom, 1 bathroom, sauna



107-154 m<sup>2</sup>

model range  
gross area m<sup>2</sup> (total area m<sup>2</sup>)

### M3

107 (181) m<sup>2</sup>  
2 bedrooms, 1 bathroom



### M3+

124 (181) m<sup>2</sup>  
3 bedrooms, 1 bathroom



### M5

137 (223) m<sup>2</sup>  
2 bedrooms, 2 bathrooms, sauna



### M5+

154 (223) m<sup>2</sup>  
3 bedrooms, 2 bathrooms, sauna



204-223 m<sup>2</sup>

model range  
gross area m<sup>2</sup> (total area m<sup>2</sup>)

### M7

205 (294) m<sup>2</sup>  
3 bedrooms, 2 bathrooms, sauna



### M7G

223 (292) m<sup>2</sup>  
3 bedrooms, 2 bathrooms, sauna  
garage



### M9

204 (242) m<sup>2</sup>  
3 bedrooms, 2 bathrooms







## Villa 3G

260 (345) m<sup>2</sup>

3 bedrooms, 3 bathrooms, sauna



## Villa 4G

360 (498) m<sup>2</sup>

5 bedrooms, 3 bathrooms

260-360 m<sup>2</sup>

model range

gross area m<sup>2</sup> (total area m<sup>2</sup>)

# FEATURES



# FEATURES

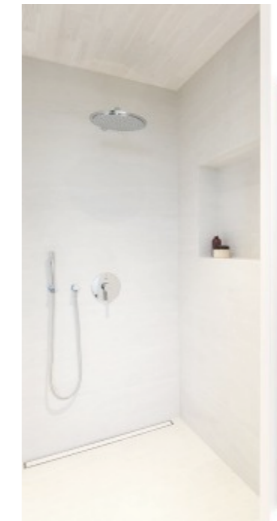


## CUSTOM DESIGN

Passion Houses are custom designed in every aspect. From exterior outlook to small details you will find creative solutions and materials to achieve unique house.

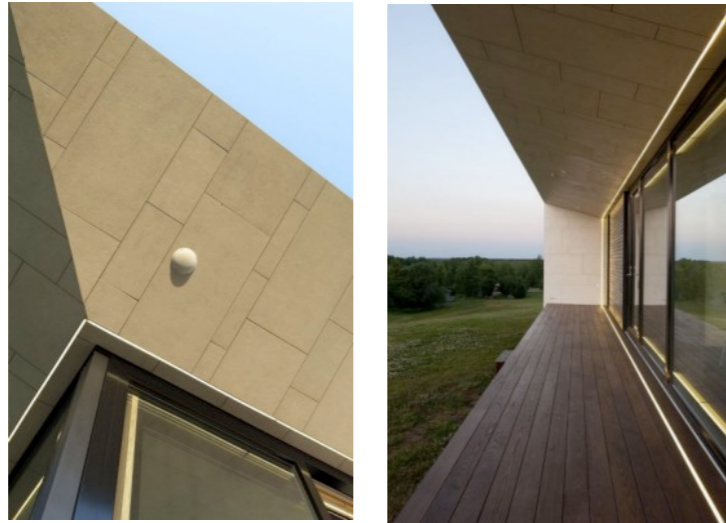
## PLUG IN LIVING

Passion House is fully furnished and ready for living. Houses are equipped with all necessary furniture, home appliances, lighting, heating and ventilation systems.



## FULLY EQUIPPED KITCHEN

Passion House has built in kitchen with all necessary modern kitchen solutions and home appliances. Kitchen level of stone with stainless steel sink and Grohe faucet make every food lover's heart beat faster.

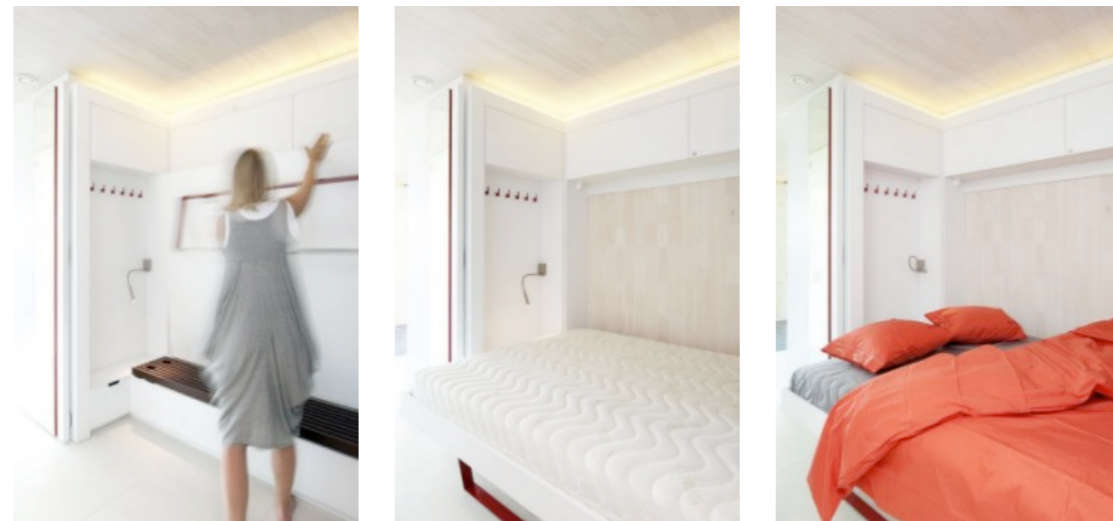


## COOPERATING WITH NATURE

Passion houses are created to cooperate with Mother Earth and they are specially designed and engineered to consume little energy. Passion House's roof line keeps sun heat away in summer and helps to absorb most of the energy in cooler seasons.

## INTEGRATED FURNITURE SOLUTIONS

Having guests overnight or like to change your room for different occasions? Fold the bed flat and make it happen.



## CLEVER STORAGES

Every family have lots of goods to live a comfortable life. But you do not need them all the time. That is why Passion House has many clever storage spaces. Some of them are so hidden that only you can find your secret things.

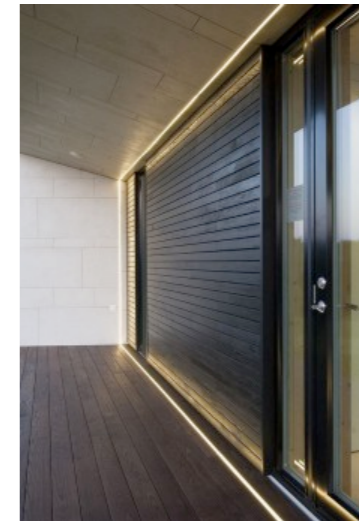
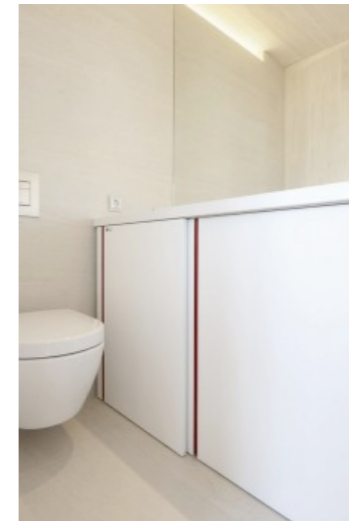


## SMART HOME SYSTEM

Passion House's "Welcome Home" system will set your needed lighting and ventilation levels on arrival. House tracks CO2 level to keep room climate always fresh and healthy. You can change room temperature, close or open electrical blinds or switch lights on multifunctional touchscreen panels.

## 100% LED LIGHTS

Clear and bright illumination for your evenings.  
Inside and outside. What about romantic moments?  
No worries. You can dim it.

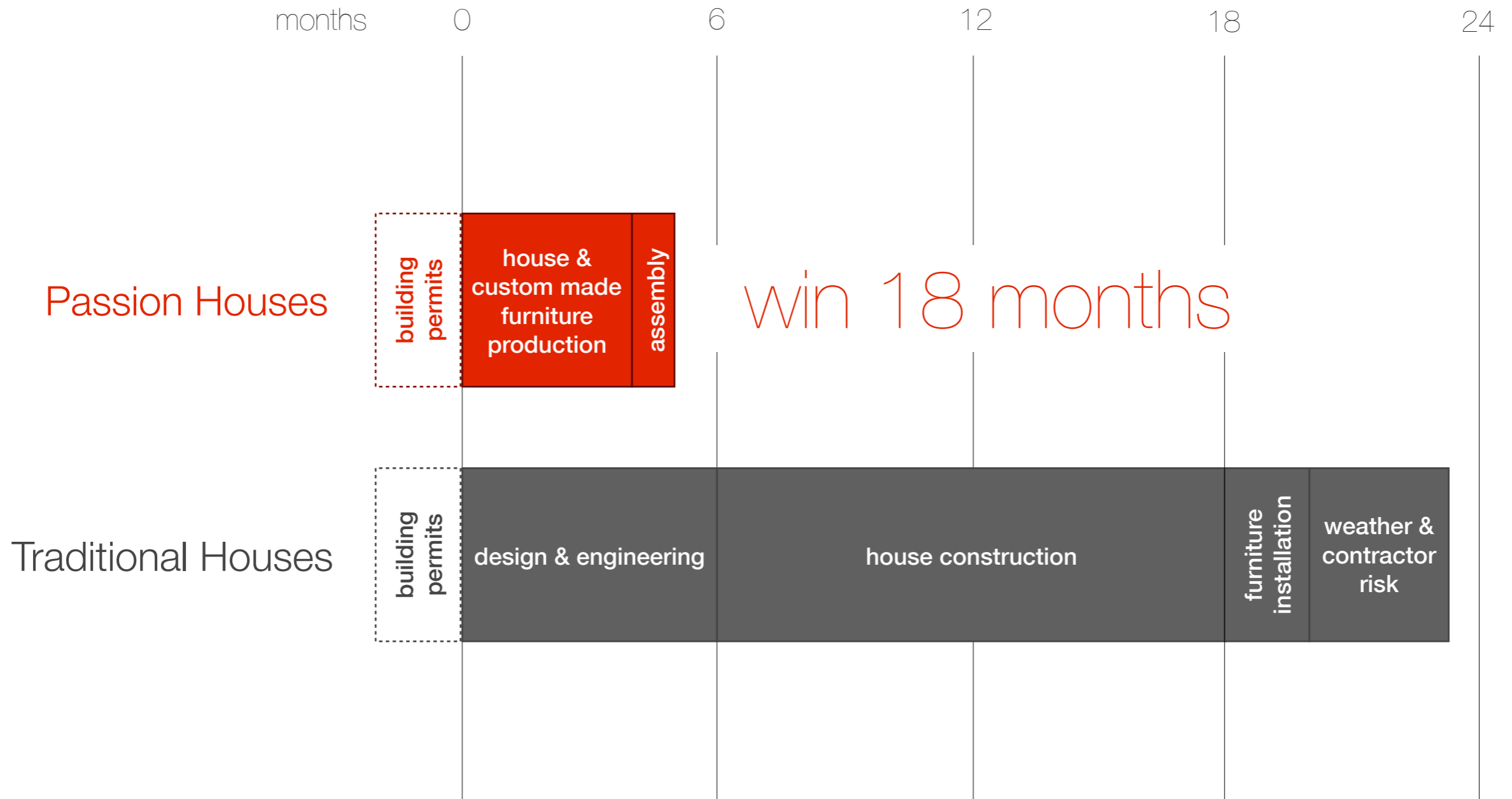


# SMART DECISION

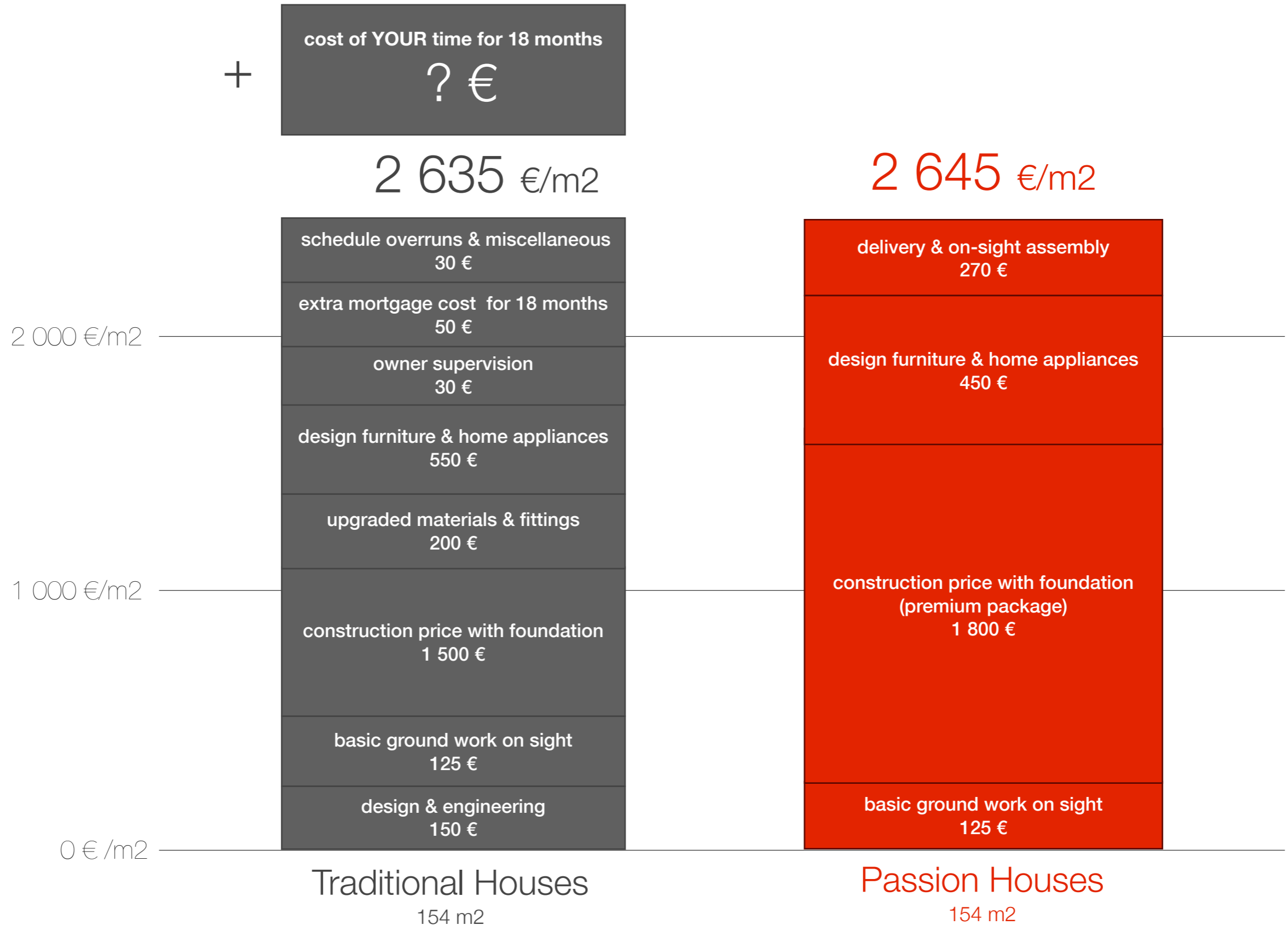
---



# COMPARE BUILDING TIME



# COMPARE PRICING







---

**Passion Group Ltd**

Joa 2, 10127 Tallinn

Estonia

European Union

Phone +372 609 0088

E-mail: [info@passionhouses.com](mailto:info@passionhouses.com)

Website: [www.passionhouses.com](http://www.passionhouses.com)